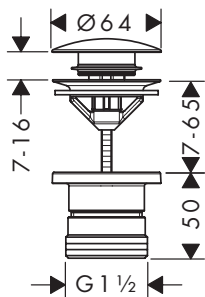
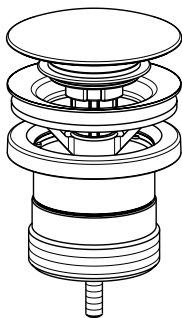


# hansgrohe

**EN** Assembly instructions

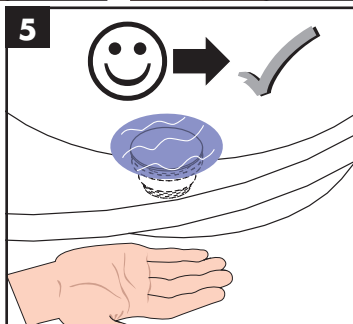
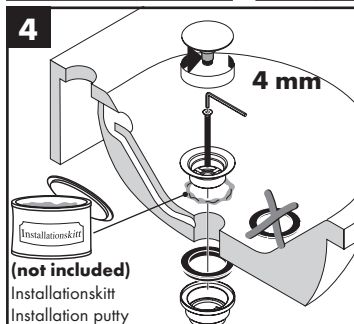
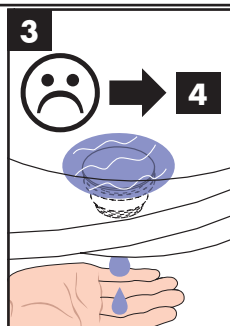
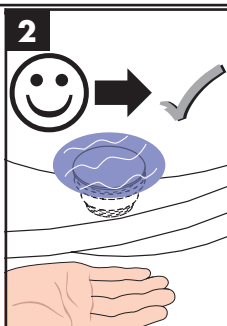
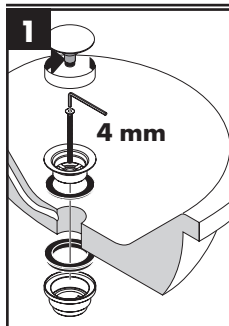
**DE** Montageanleitung



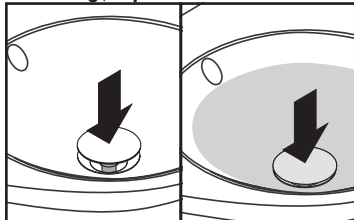
**Push-Open**  
50130XX3

**DE** Das Ablaufventil darf nur in Waschbecken mit Überlauf eingesetzt werden.

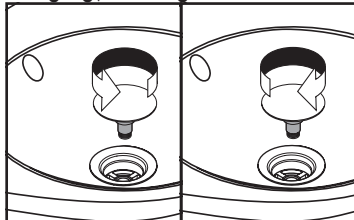
**EN** The drain valve may only be installed in basins with an overflow opening.



### Bedienung / Operation



### Reinigung / Cleaning



**hansgrohe**

Hansgrohe · Auestraße 5 · 9 · D-77761 Schiltach  
Telefon +49 (0) 78 36/51-1282 · Telefax +49 (0) 7836/511440  
E-Mail: [info@hansgrohe.com](mailto:info@hansgrohe.com) · Internet: [www.hansgrohe.com](http://www.hansgrohe.com)

03/2025  
9.09390.31