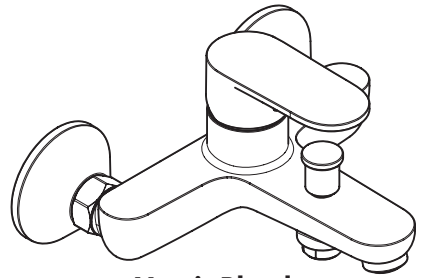


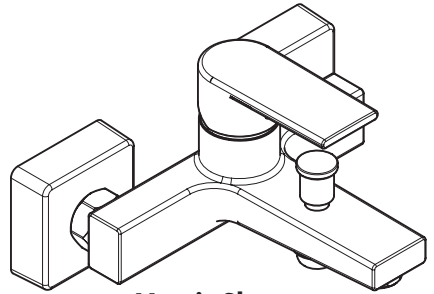
**EN** Assembly instructions

**DE** Montageanleitung



**Vernis Blend**

71440XX3







**Vernis Shape**

71450XX3

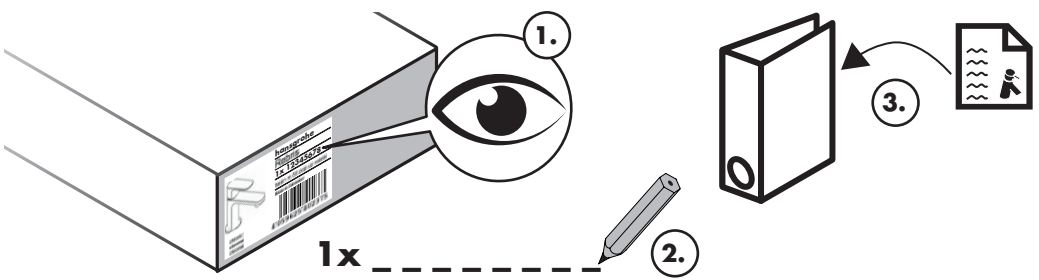
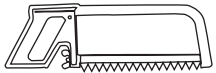
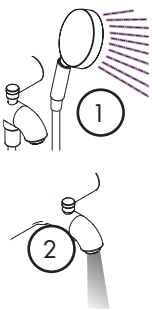
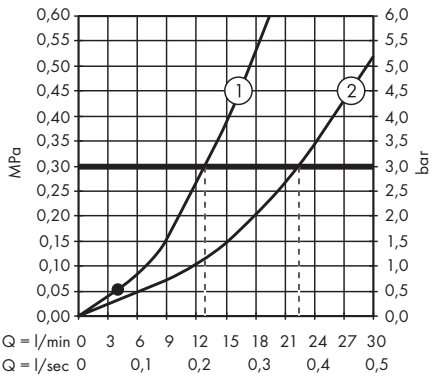


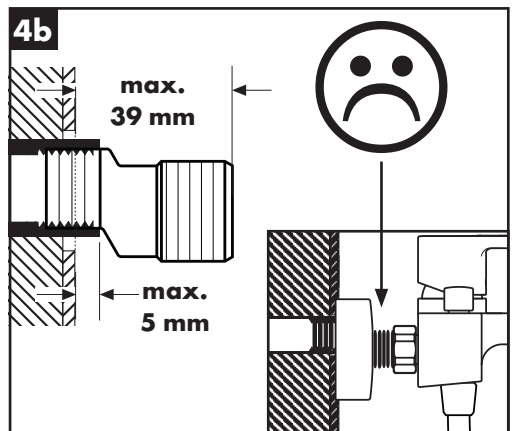
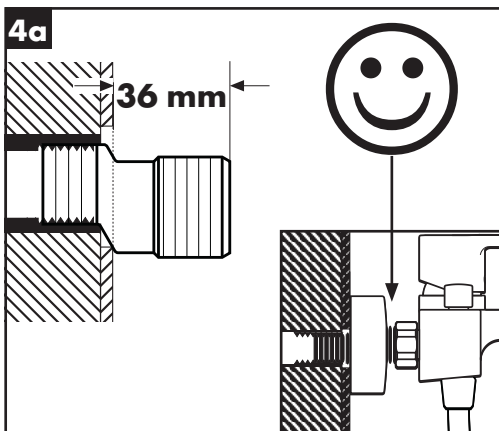
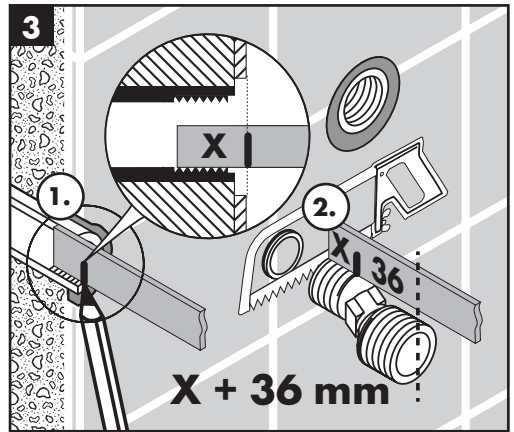
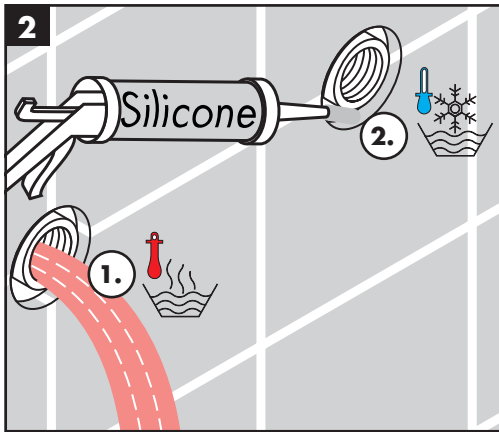
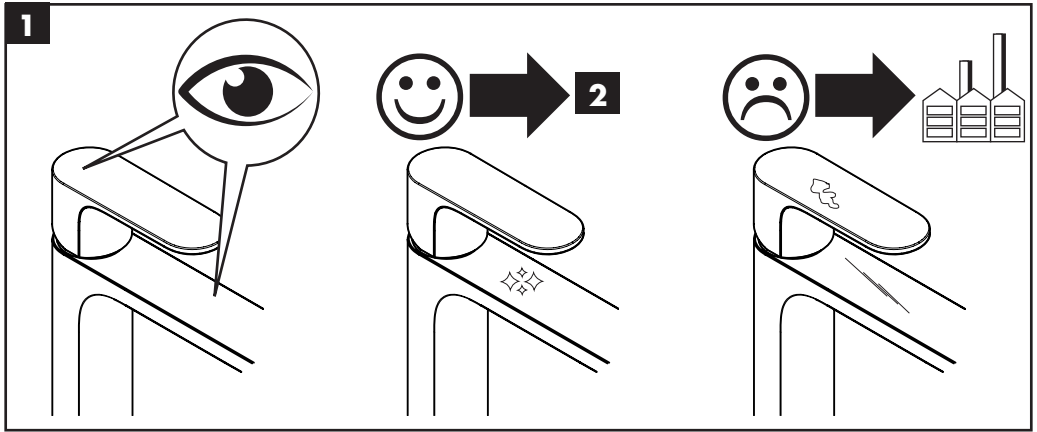
EN 1717 | EN 806 | DIN 1988

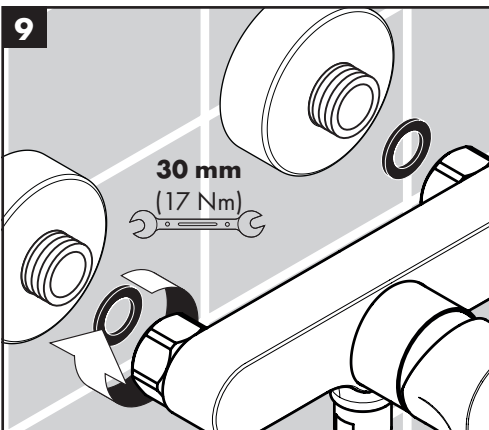
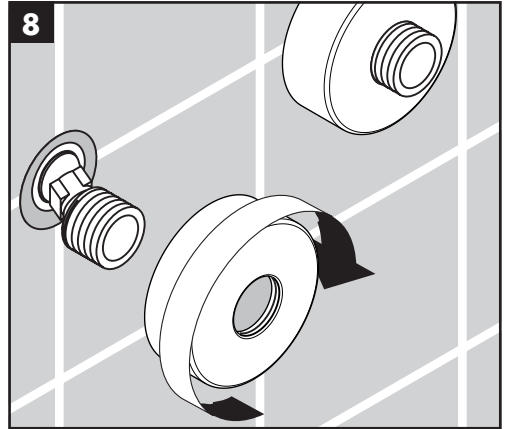
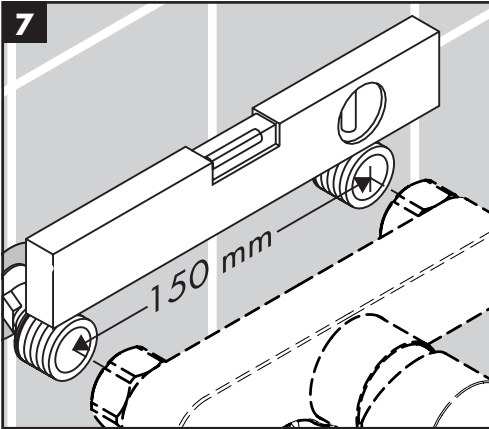
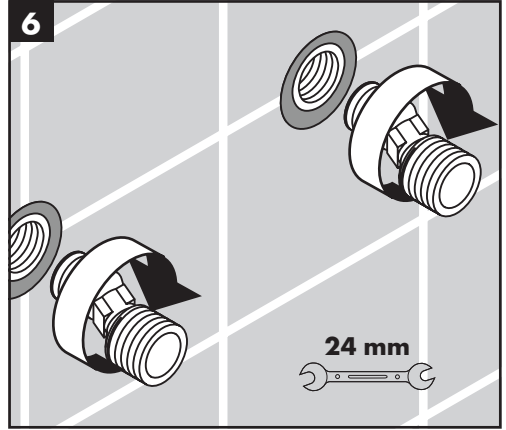
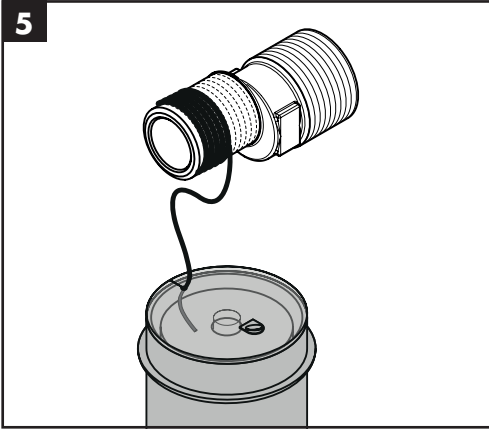
	<b>P</b> max. 1 MPa (10 bar)	0,1 - 0,5 MPa (1 - 5 bar)	
	<b>T</b> max. 60 °C	< 50 °C	

Vernis Blend 71440XX3

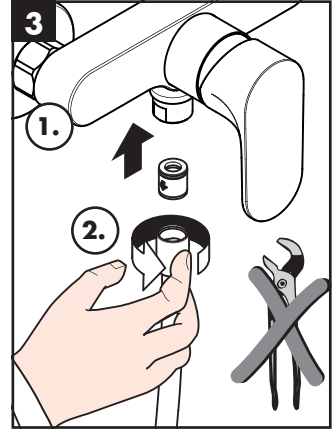
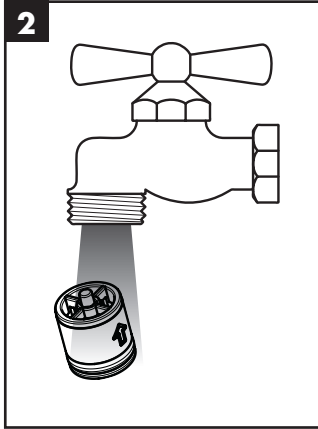
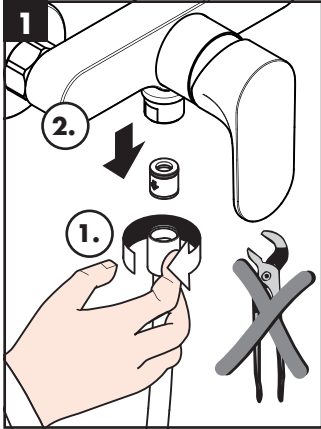
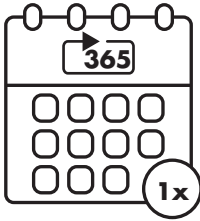
Vernis Shape 71450XX3



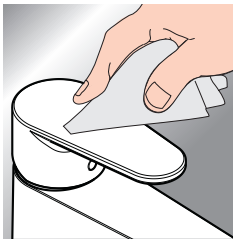




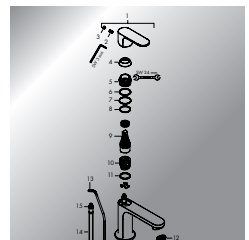
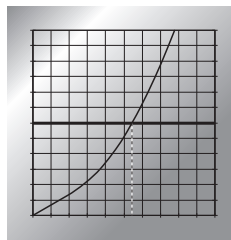
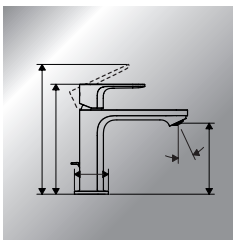
EN 806-5



[www.hansgrohe.com/search](http://www.hansgrohe.com/search)



\* [www.hansgrohe.com/warranty](http://www.hansgrohe.com/warranty)



---

**hansgrohe**

Hansgrohe · Austraße 5 · 9 · D-77761 Schiltach · Telefon +49 (0) 78 36/51-1282 · Telefax +49 (0) 7836/511440  
E-Mail: [info@hansgrohe.com](mailto:info@hansgrohe.com) · Internet: [www.hansgrohe.com](http://www.hansgrohe.com)

03/2025  
9,07176.32