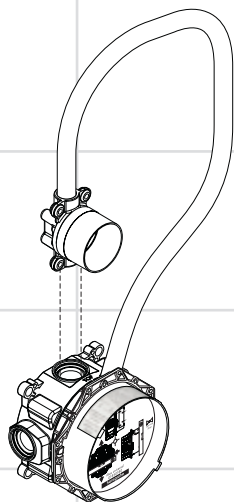


AXOR[®]

hansgrohe

- EN** Installation / User Instructions / Warranty
- FR** Instructions de montage / Mode d'emploi / Garantie
- ES** Instrucciones de montaje / Manejo / Garantía



16180181

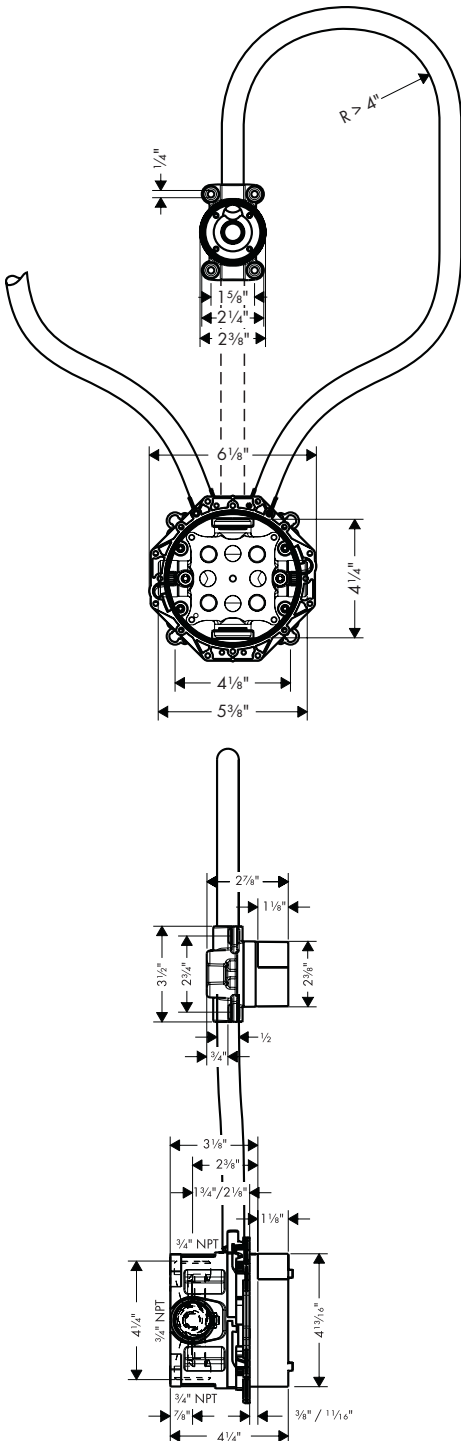
Technical Information

Recommended water pressure	15 - 75 psi
Max. water pressure	145 psi
Recommended hot water temp.	120° - 140° F*
Max. hot water temp	176° F*

*Please know and follow all applicable local plumbing codes when setting the temperature on the water heater.

Installation Considerations

- For best results, Hansgrohe recommends that this unit be installed by a licensed, professional plumber.
- Please read over these instructions thoroughly before beginning installation. Make sure that you have all tools and supplies needed to complete the installation.
- The rough must be installed so that the outside surface of the finished wall falls between the "min" and "max" lines on the plaster shields.
- To insure correct operation of the faucet, the hot supply must be installed on the left, and the cold supply must be installed on the right.
- Only one outlet on the mixer iBox is used. The second outlet must be sealed with a 3/4" plug.
- The rough and the transformer must all remain accessible for future servicing
- Keep this booklet and the receipt (or other proof of date and place of purchase) for this product in a safe place. The receipt is required should it be necessary to request warranty parts.



Données techniques

Pression d'eau recommandée	15 - 75 psi
Pression d'eau maximum	145 psi
Température recommandée d'eau chaude	120° - 140° F*
Température maximum d'eau chaude	176° F*

* Vous devez connaître et respecter tous les codes de plomberie locaux applicables pour le réglage de la température du chauffe-eau.

À prendre en considération pour l'installation

- Pour de meilleurs résultats, Hansgrohe recommande que ce produit soit installé par un plombier professionnel licencié.
- Veuillez lire attentivement ces instructions avant de procéder à l'installation. Assurez-vous de disposer de tous les outils et du matériel nécessaires pour l'installation.
- Installez le boîtier iBox de façon à ce que la surface extérieure du mur fini tombe entre les lignes « min » et « max » figurant sur le protecteur de plâtre.
- Pour que le robinet fonctionne correctement, la valve d'eau chaude doit être installée à gauche, et la valve d'eau froide, à droite.
- Une seule sortie est utilisée sur le boîtier iBox. L'autre orifice de sortie doit être scellé à l'aide d'un bouchon de 3/4 po.
- Le boîtier iBox et la pièce iBox du robinet et le transformateur doivent tous demeurer accessibles pour entretien ultérieur.
- Conservez ce livret et le reçu (ou une autre preuve sur laquelle figurent la date et l'endroit de l'achat) pour ce produit dans un endroit sûr. Le reçu est requis si vous commandez des pièces sous garantie.

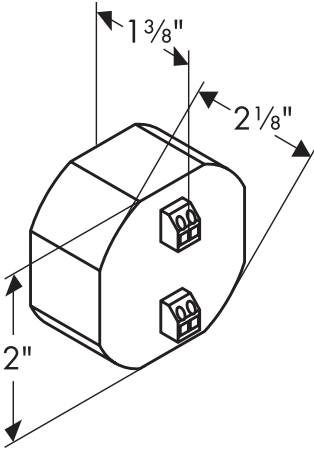
Datos técnicos

Presión recomendada en servicio	15 - 75 psi
Presión en servicio max.	145 psi
Temperatura recomendada del agua caliente	120° - 140° F*
Temperatura del agua caliente max.	176° F*

* Debe conocer y cumplir todos los códigos locales aplicables para ajustar la temperatura del calentador de agua.

Consideraciones para la instalación

- Para obtener mejores resultados, la instalación debe estar a cargo de un plomero profesional matriculado.
- Antes de comenzar la instalación, lea estas instrucciones detenidamente. Asegúrese de tener las herramientas y los insumos necesarios para completar la instalación.
- La caja iBox Universal Plus se debe instalar de forma tal que la superficie exterior de la pared terminada quede entre las líneas "mínimo" y "máximo" marcadas en el protector de yeso.
- Para que el grifo funcione correctamente, debe instalar el suministro de agua caliente a la izquierda y el de agua fría a la derecha.
- Se utiliza una sola toma de la caja iBox. La segunda toma se debe sellar con un tapón de 3/4".
- La caja iBox Universal Plus, el grifo iBox y el transformador deben instalarse en un lugar accesible para permitir el mantenimiento futuro.
- Mantenga este folleto y el recibo (u otro comprobante del lugar y fecha de compra) de este producto en lugar seguro. El recibo se requiere en caso de ser necesario solicitar piezas bajo garantía.



The transformer is certified by CSA for use in the US and Canada.

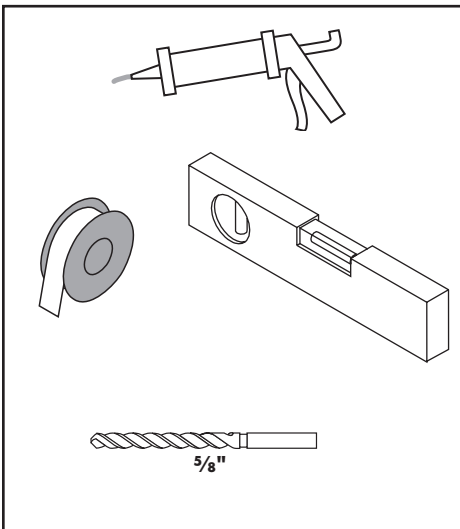
Le transformateur est certifié par la CSA pour l'utilisation aux États-Unis et au Canada.

El transformador está certificado por CSA para su uso en Estados Unidos y Canadá.

Electrical Service

- **The trim kit includes a transformer to provide power for the faucet**
- A code-approved electrical box with 110 V electrical service must be installed for the transformer in a safe, dry, accessible location. It must be installed by a licensed electrician in compliance with all applicable local codes.
- The electrical supply must be equipped with an approved circuit breaker.
- This unit includes approximately 23 feet of flexible plastic conduit for the wire connecting the transformer to the iBox.
- **The conduit provided may not be code approved in all municipalities.** If it is not, the homeowner or the installer must provide approved conduit. Hansgrohe is not responsible for the cost of the conduit.
- The provided conduit must be secured at least every 20". The bend radius must not be greater than 4".

Tools Required / Outils Utiles / Herramientas Útiles









Branchement électrique

- **L'ensemble de garniture comprend un transformateur pour alimenter le robinet**
- Le transformateur nécessite l'installation d'un boîtier électrique satisfaisant au code électrique en vigueur avec branchement 110 V dans un endroit sécuritaire, sec et accessible. L'installation doit être effectuée par un électricien certifié, en conformité avec tous les codes locaux en vigueur.
- L'alimentation électrique doit être munie d'un disjoncteur approuvé.
- Ce produit comprend un conduit en plastique flexible d'une longueur d'environ 7 mètres pour le fil connectant le transformateur au boîtier iBox.
- **Il est possible que le conduit fourni ne soit pas approuvé dans toutes les municipalités.** Le cas échéant, le propriétaire ou l'installateur doit fournir un conduit approuvé. Hansgrohe n'assumera pas le coût de ce conduit.
- Le conduit fourni doit être bien fixé à tous les 500 mm environ. Le rayon de courbure ne doit pas excéder 100 mm.


Servicio eléctrico

- **El juego de pieza exterior incluye un transformador para alimentar al grifo.**
- Se debe instalar una caja eléctrica aprobada por código con suministro de 110 V para el transformador, en una ubicación segura, seca y de fácil acceso. La instalación la debe realizar un electricista matriculado que cumpla con todos los códigos locales aplicables.
- La alimentación eléctrica debe estar equipada con un disyuntor aprobado.
- Esta unidad incluye aproximadamente 23 pies de conducto plástico flexible para los cables que conectan el transformador con la caja iBox.
- **Puede suceder que el conducto provisto no esté aprobado por los códigos de todos los municipios.** Si no estuviera aprobado, el dueño de casa o el instalador debe proporcionar el conducto aprobado. Hansgrohe no se hará cargo del costo del conducto.
- El conducto provisto debe asegurarse al menos cada 20". El radio de flexión no debe superar las 4".


Symbols Used

	Transformer	Transformateur	Transformador
	Electrical conduit	Conduit	Conducto
	110 V to transformer	110 V	110 V
	12 V from transformer	12 V	12 V
	Hot water supply	Chaud	Caliente
	Cold water supply	Froid	Fría

Hansgrohe recommends a minimum of 24" between the transformer and the tub/shower area. Some local codes specify a greater distance.

 **It is the responsibility of the installer to know and follow all applicable local codes when installing this product.**

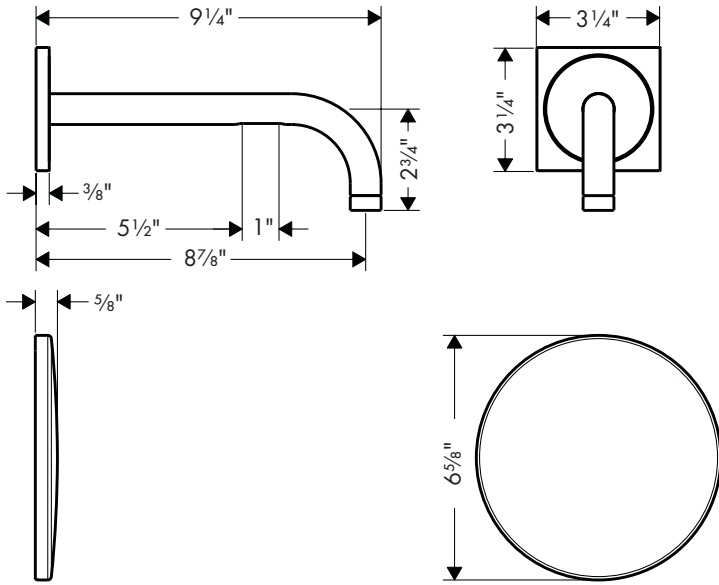
Hansgrohe recommande une distance minimum de 600 mm entre le transformateur et l'emplacement de la baignoire/douche. Certains codes électriques locaux exigent une plus grande distance.

 **L'installateur a la responsabilité de connaître et respecter tous les codes locaux applicables en vigueur lors de l'installation de ce produit.**

Hansgrohe recomienda un espacio mínimo de 24" entre el transformador y el área de la bañera/ducha. Algunos códigos locales fijan una distancia mayor.

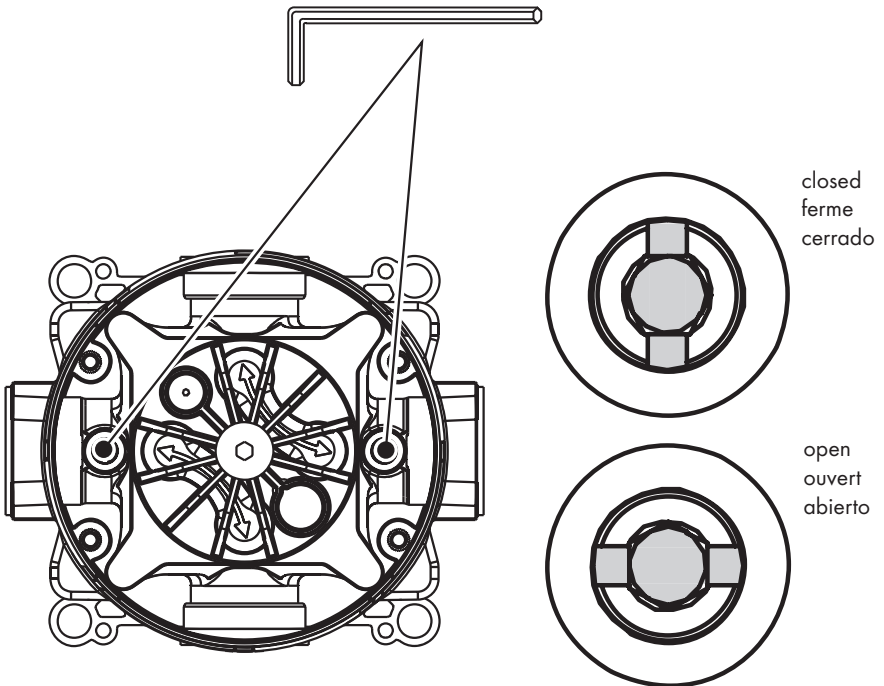
 **Es responsabilidad del instalador conocer y cumplir con todos los códigos locales aplicables, cuando instala este producto.**

Trim Kits / Jeux de Garnitures / Piezas Exteriores

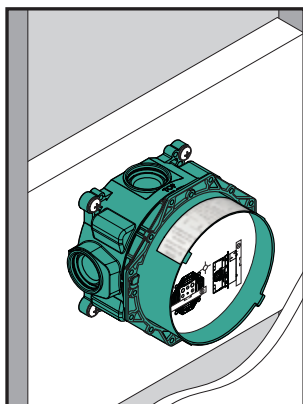


Axor Uno 38120xx1

Service Stops / Butées d'arrêt d'isolation / Cierres de servicio



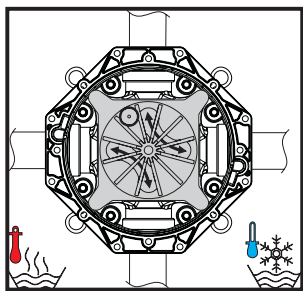
Installation Suggestions / Suggestions d'installation / Sugerencias para la instalación



It is possible to support the iBox Plus Universal using a stringer and screws (not included).

Es posible apoyar la válvula que utiliza una placa trasera y tornillos (no incluido).

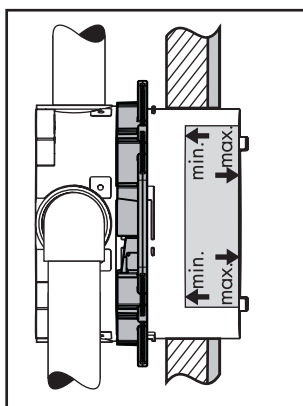
C'est possible de soutenir le robinet utilisant un plaque arrière et vis (pas inclus).



To insure correct operation of the valve, the hot supply must be on the left and the cold supply must be on the right.

Para que la válvula funcione correctamente, el suministro de agua caliente debe estar a la izquierda y el de agua fría a la derecha.

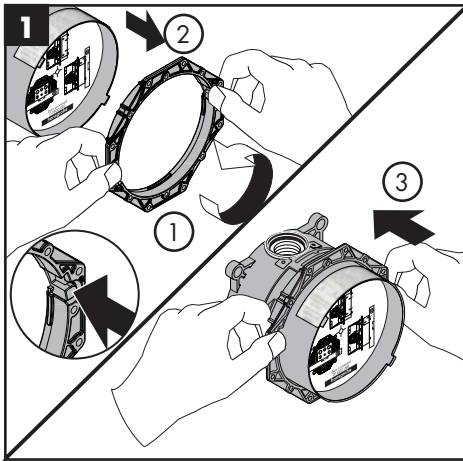
Pour que la valve fonctionne correctement, l'alimentation en eau chaude doit être installée à gauche, et celle de l'eau froide, à droite.



To insure correct fit of the trim, the outside surface of the finished wall must fall between the "min" and "max" markings on the plaster shield.

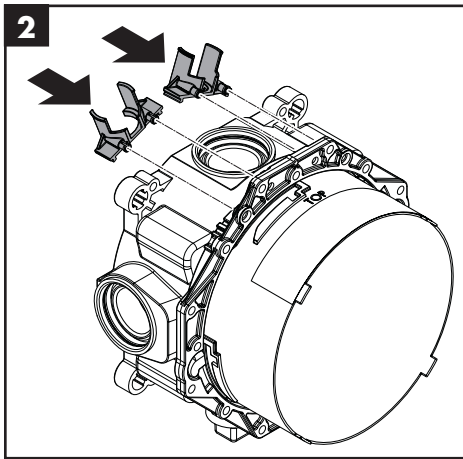
Para que la pieza exterior ajuste correctamente, la superficie externa de la pared terminada debe quedar entre las marcas de máximo y mínimo del protector de yeso.

Pour que la garniture s'ajuste de façon adéquate, la surface extérieure du mur fini doit se situer entre les marques « min » et « max » figurant sur le protecteur de plâtre.

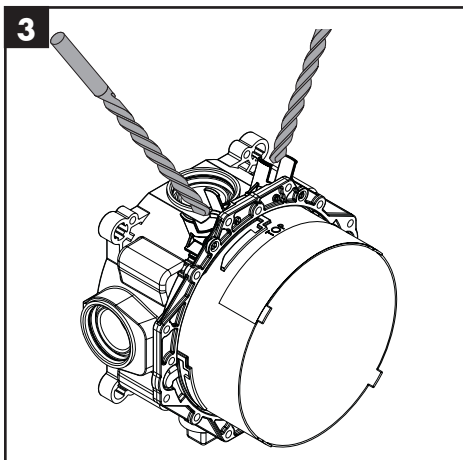


Installation

Move the fixing ring to the rear position.



Install the conduit clips.



Drill two holes through the plaster shields at the conduit clips using a $\frac{5}{8}$ " bit.



Do not drill into the metal!

Installation

Déplacez la bague de fixation en position arrière.

Installez les clips du conduit.

Percez deux trous dans les protecteurs à proximité des clips à l'aide d'une mèche de $\frac{5}{8}$ po (16 mm).



Ne pas percer dans la partie métallique de la soupape !

Instalación

Gire la arandela de fijación hasta la posición de tope.

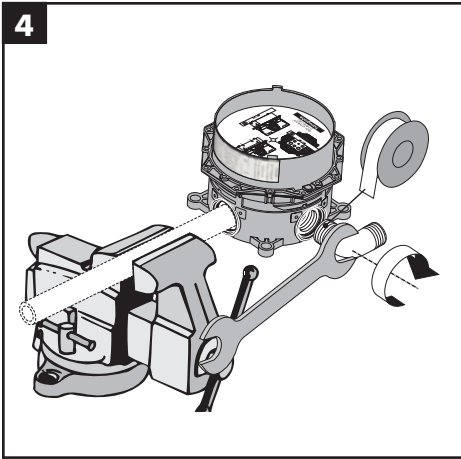
Instale las presillas del conducto.

Realice dos orificios en el protector de yeso al nivel de las presillas del conducto con una broca de $\frac{5}{8}$ ".



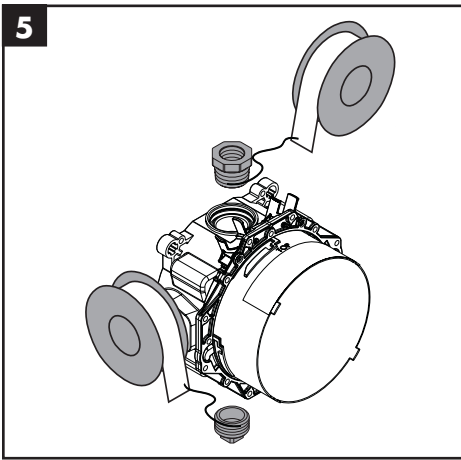
¡No realice en la parte metálica de la válvula!

4



Install the elbows for the hot and cold water supplies.

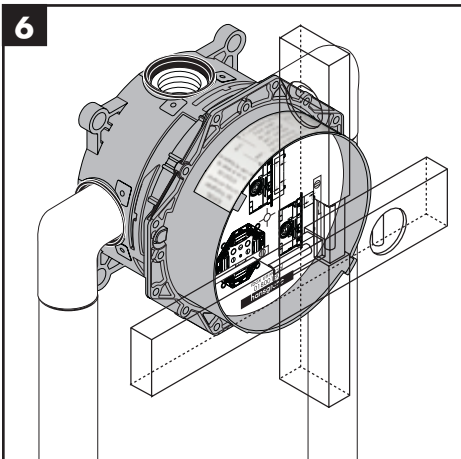
5



Install a $\frac{3}{4}$ " - $\frac{1}{2}$ " bushing (not included) in one outlet port.

Seal the second outlet port with a $\frac{3}{4}$ " plug.

6



Install the iBox in the wall. See page 7 for installation options.

Installez les coudes pour l'alimentation de l'eau chaude et de l'eau froide.

Installez une douille de $\frac{3}{4}$ po - $\frac{1}{2}$ po (ne pas inclus) dans une des orifices de sortie.

La seconde orifice de sortie doit être obstruée à l'aide d'un bouchon de $\frac{3}{4}$ po.

Installez le boîtier iBox dans le mur. Voir la page 7 pour les options d'installation.

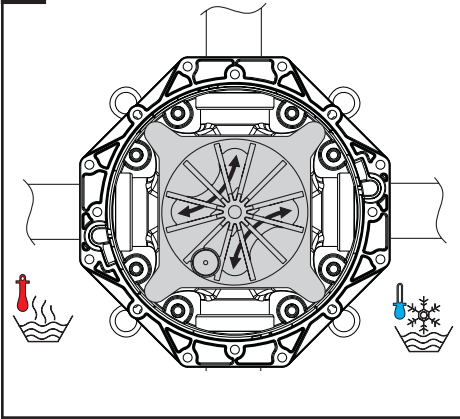
Instale los codos para los suministros de agua caliente y agua fría.

Instale un casquillo de $\frac{3}{4}$ " - $\frac{1}{2}$ " (no incluidos) en uno de los orificios de salida.

Selle el segundo orificio de salida con un tapón de $\frac{3}{4}$ ".

Instale la caja iBox en la pared. Consulte las alternativas de instalación en la página 7.

7

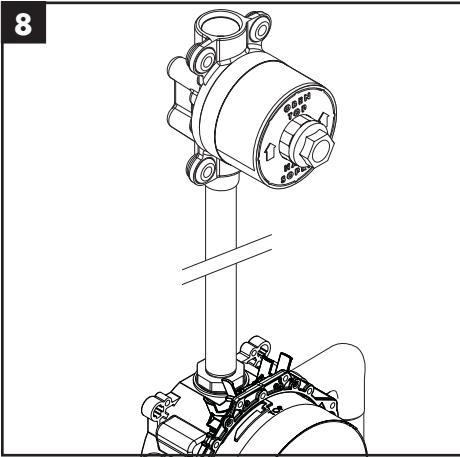


Use the lugs on the plaster shield to make sure that the iBox is level.



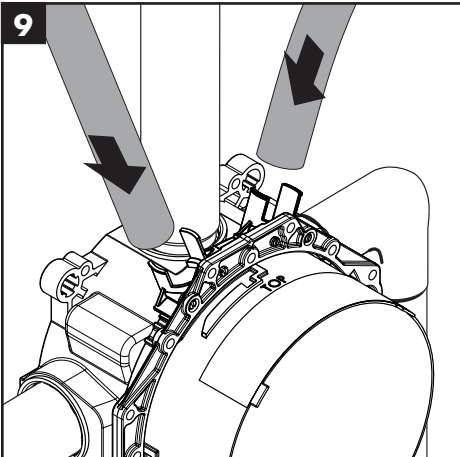
For proper operation of the valve, the hot supply must be on the left and the cold supply must be on the right.

8



Connect the iBox to the faucet iBox using $\frac{1}{2}$ " pipe.

9



Install the electrical conduits in the conduit clips.

Français

Utilisez les parties saillantes du protecteur pour vous assurer que le boîtier iBox est à niveau.



Pour que la valve fonctionne correctement, l'alimentation en eau chaude doit être installée à gauche, et celle de l'eau froide, à droite.

Connectez le boîtier iBox à la pièce iBox du robinet à l'aide d'un tuyau de 1/2 po.

Installez les conduits électriques dans les clips de conduit.

Español

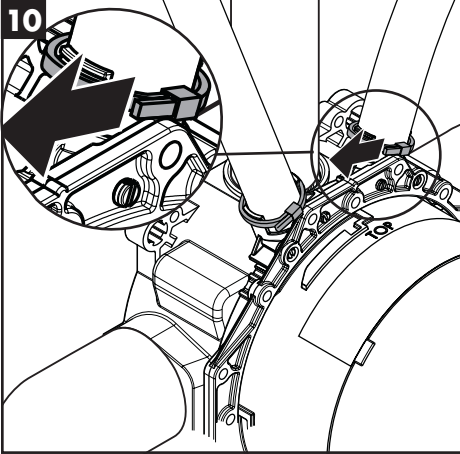
Utilice los salientes del protector de yeso para asegurarse de que la caja iBox esté nivelada.



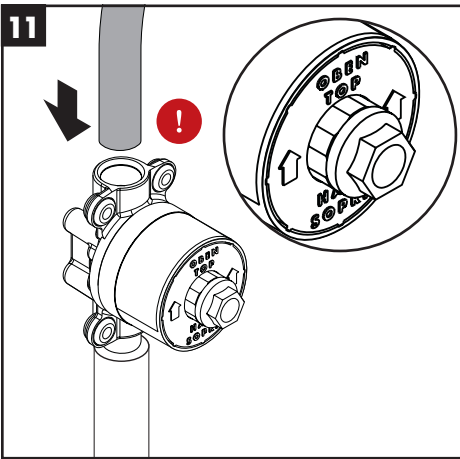
Para que la válvula funcione correctamente, el suministro de agua caliente debe estar a la izquierda y el de agua fría a la derecha.

Conecte la caja iBox al grifo iBox con una cañería de 1/2".

Instale los conductos eléctricos en las presillas del conducto.

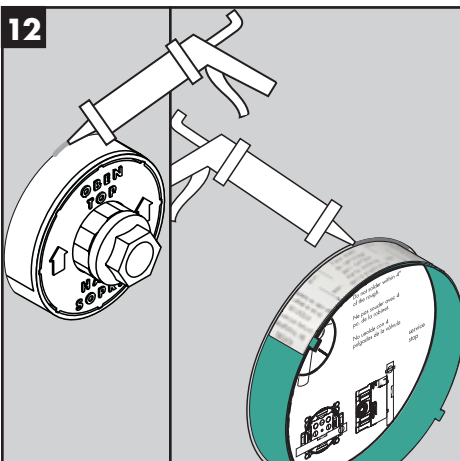


Use the cable ties to secure the conduits.



Connect one of the conduits to the **top** of the faucet iBox.

Connect the second conduit to the electrical box for the transformer (the transformer is included with the trim kit.)



Install the sheet rock or green board on the wall. It should come up to the iBoxes.

Use sealant to fill any gap between the iBox and the sheet rock or green board.

Utilisez les attache-câbles pour fixer les conduits en place.

Connectez un des conduits sur le dessus de la pièce iBox du robinet.

Connectez le second conduit au boîtier électrique du transformateur (le transformateur est compris dans l'ensemble de garniture.)

Installez le panneau de plâtre ou le panneau de plâtre imperméable sur le mur. Il doit atteindre les pièces iBox.

Scellez l'espace entre le panneau de plâtre (ou le panneau imperméable) à l'aide d'un agent d'étanchéité.

Use los cables para asegurar los conductos.

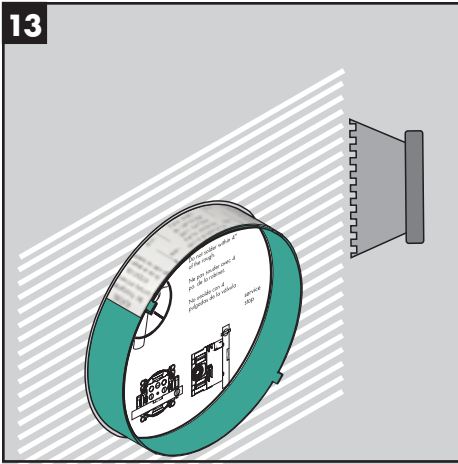
Conecte uno de los conductos a la parte superior del grifo iBox.

Conecte el segundo conducto a la caja eléctrica del transformador (el transformador está incluido en el juego de pieza exterior).

Instale la placa de yeso o el panel verde en la pared. Debe llegar hasta las cajas iBox.

Use sellador para llenar los espacios entre la caja iBox y la placa de yeso o el panel verde.

13

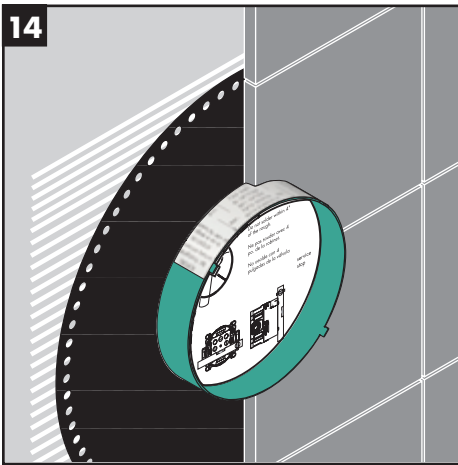


Spread adhesive on the sheet rock or green board around the iBox.



Do not use hot glue.

14



Install the gaskets.

Install the finished wall surface over the gaskets.

The outside surface of the finished wall should fall between the "min" and "max" lines on the plaster shield.

Français

Appliquez un adhésif sur le panneau de plâtre (ou le panneau imperméable) autour du boîtier iBox.



N'utilisez pas de colle chaude.

Installez les joints.

Installez la surface murale finie sur les joints.

La surface extérieure du mur fini doit se situer entre les lignes «min» et «max» figurant sur le protecteur.

Español

Distribuya adhesivo sobre la placa de yeso o el panel verde alrededor de la caja iBox.



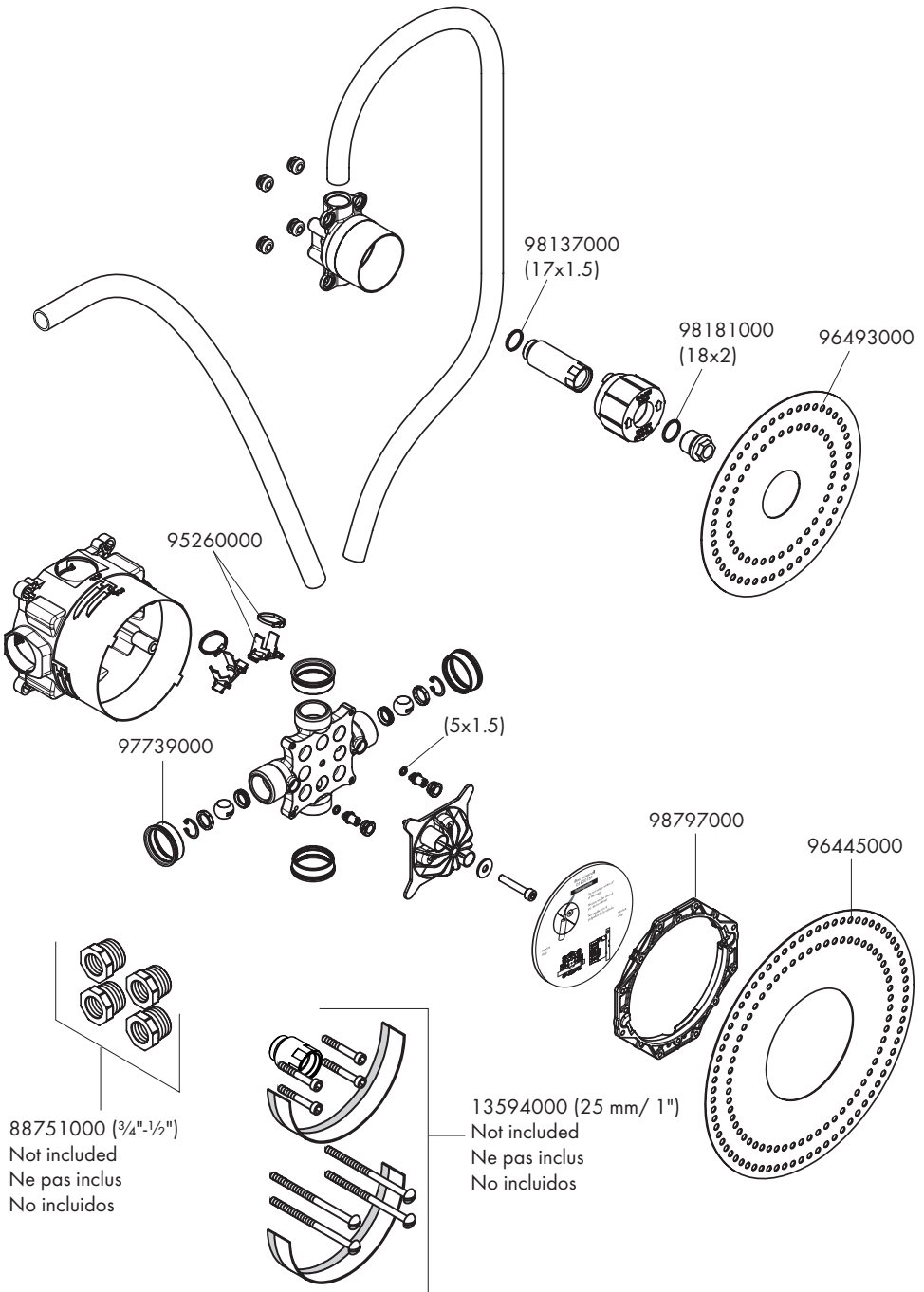
No use cola caliente.

Instale las juntas.

Instale la superficie de la pared terminada sobre las juntas.

La superficie exterior de la pared terminada debe quedar entre las líneas de máximo y mínimo del protector de yeso.

Replacement Parts / Pièces détachées / Repuestos



Limited Consumer Warranty

This product has been manufactured and tested to the highest quality standards by Hansgrohe, Inc. ("Hansgrohe"). This warranty is limited to Hansgrohe products that are purchased by a consumer in the United States or Canada after March 1, 1996, and installed in either in the United States or in Canada.

WHO IS COVERED BY THE WARRANTY

This warranty extends to the original purchaser only. This warranty is non-transferable.

WHAT IS COVERED BY THE WARRANTY

The warranty covers only your Hansgrohe manufactured product. Hansgrohe warrants this product against defects in material or workmanship as follows:

Hansgrohe will replace at no charge for parts only or, at its option, replace any product or part of the product that proves defective because of improper workmanship and/or material, under normal installation, use, service and maintenance. If Hansgrohe is unable to provide a replacement and repair is not practical or cannot be made in timely fashion, Hansgrohe may elect to refund the purchase price in exchange for the return of the product.

LENGTH OF WARRANTY

Replacement or repaired parts of products will be covered for the term of this warranty, as stated in the following two sentences. If you are a consumer who purchased the product for use primarily for personal, family or household purposes, this warranty extends for as long as you own the product and the home in which the product is originally installed. If you purchased the product for use primarily for any other purpose, including, without limitation, a commercial purpose, this warranty extends only (i) for 1 year, with respect to Hansgrohe & Commercial products, and (ii) for 5 years, with respect to Axor products.

THIS WARRANTY DOES NOT COVER, AND HANSGROHE WILL NOT PAY FOR:

- A. Conditions, malfunctions or damage not resulting from defects in material or workmanship.
- B. Conditions, malfunctions or damage resulting from (1) normal wear and tear, improper installation, improper maintenance, misuse, abuse, negligence, accident or alteration; (2) the use of abrasive or caustic cleaning agents or "no-rinse" cleaning products, or the use of the product in any manner contrary to the product instructions; or (3) conditions in the home such as excessive water pressure or corrosion.
- C. Labor and other expenses for disconnection, deinstallation, or return of the product for warranty service (including but not limited to proper packaging and shipping costs), or for installation or reinstallation of the product.
- D. Accessories, connected materials and products, or related products not manufactured by Hansgrohe.
- E. Any Hansgrohe or Axor product sold for display purposes.
- F. Rubbed Bronze finish is subject to a 3-year limited warranty. Chrome and all PVD finishes are covered by the limited lifetime warranty.
- G. Hansgrohe Water Filtration System is subject to a 1-year limited warranty. Warranty does not include replacement filters.

TO OBTAIN WARRANTY PARTS OR INFORMATION

Contact your Hansgrohe retailer, or contact Technical Service at:

Hansgrohe, Inc.
1492 Bluegrass Lakes Parkway
Alpharetta, GA 30004
Toll-free 800-334-0455

In requesting warranty service, you will need to provide:

1. The sales receipt or other evidence of the date and place of purchase.
2. A description of the problem.
3. Delivery of the product or the defective part, postage prepaid and carefully packed and insured, to:

Hansgrohe, Inc.
1492 Bluegrass Lakes Parkway
Alpharetta, GA 30004
Toll-free 800-334-0455

When warranty service is completed, any repaired or replacement product or part will be returned to you postage prepaid.

EXCLUSIONS AND LIMITATIONS

REPAIR OR REPLACEMENT (OR, IN LIMITED CIRCUMSTANCES, REFUND OF THE PURCHASE PRICE) AS PROVIDED UNDER THIS WARRANTY IS THE EXCLUSIVE REMEDY OF THE PURCHASER. HANSGROHE NEITHER ASSUMES NOR AUTHORIZES ANY PERSON TO CREATE FOR IT ANY OTHER OBLIGATION OR LIABILITY IN CONNECTION WITH THIS PRODUCT. HANSGROHE SHALL NOT BE LIABLE TO PURCHASER OR ANY OTHER PERSON FOR ANY INCIDENTAL, SPECIAL OR CONSEQUENTIAL DAMAGES, ARISING OUT OF BREACH OF THIS WARRANTY OR ANY IMPLIED WARRANTY (INCLUDING BUT NOT LIMITED TO ANY IMPLIED WARRANTY OF MERCHANTABILITY).

Some States do not allow the exclusion or limitation of incidental or consequential damages, so the above limitation or exclusion may not apply to you. This warranty gives you specific legal rights, and you may also have other rights that vary from state to state.

TO THE EXTENT PERMITTED BY LAW, ANY IMPLIED WARRANTIES OF MERCHANTABILITY AND FITNESS FOR A PARTICULAR PURPOSE, ARE LIMITED TO THE DURATION OF THE EXPRESS WARRANTY.

Some states do not allow limitations on how long an implied warranty may last, so the above limitations may not apply to you. You may be required by law to give us a reasonable opportunity to correct or cure any failure to comply before you can bring any action in court against us under the Magnuson-Moss Warranty Act.

PRODUCT INSTRUCTIONS AND QUESTIONS

Upon purchase or prior to installation, please carefully inspect your Hansgrohe product for any damage or visible defect. Prior to installing, always carefully study the enclosed instructions on the proper installation and the care and maintenance of this product. If you have questions at any time about the use, installation or performance of your Hansgrohe product, or this warranty, please write us or call us toll-free at 800-334-0455.



hansgrohe

Hansgrohe, Inc. • 1490 Bluegrass Lakes Parkway • Alpharetta, GA 30004

Tel. 800-334-0455 • Fax 770-889-1783

www.hansgrohe-usa.com