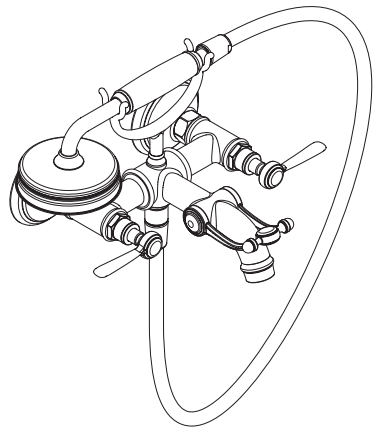


AXOR



EN / Assembly instructions
DE / Montageanleitung



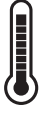

AXOR Montreux
16401009

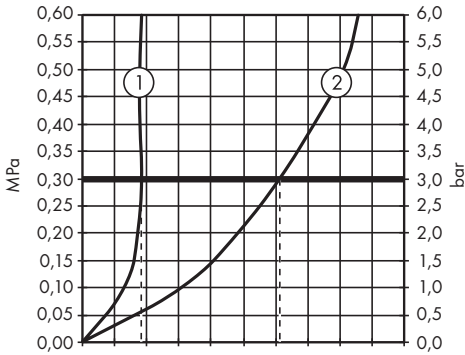
INSTALLATION



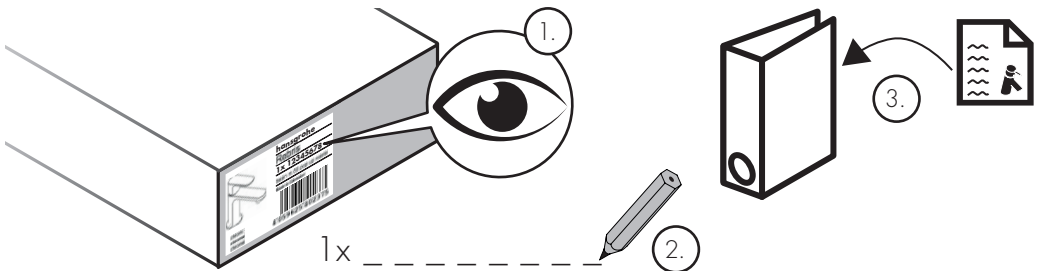
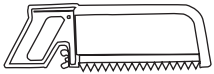
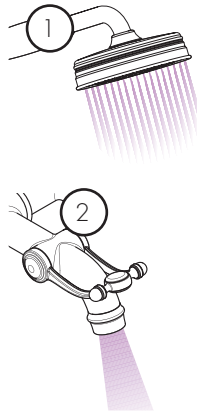
EN 1717 | EN 806 | DIN 1988

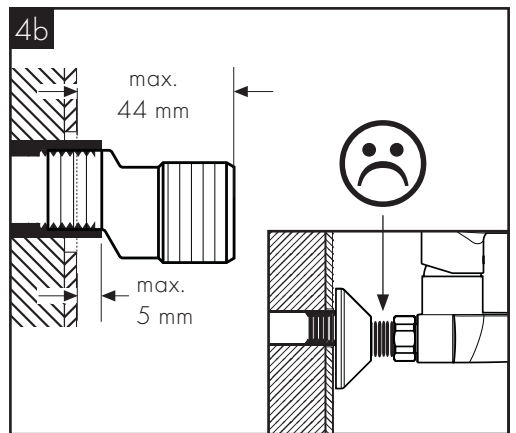
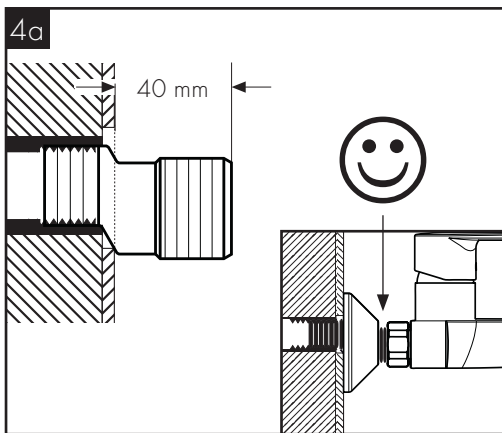
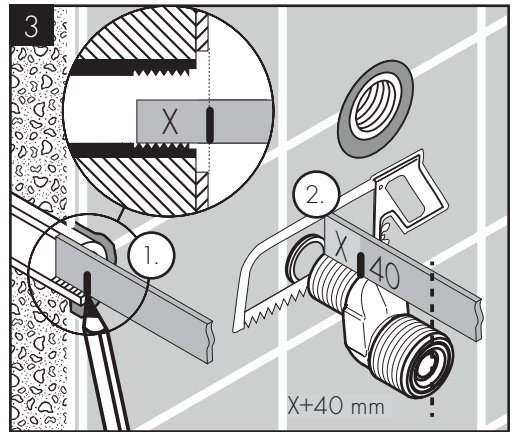
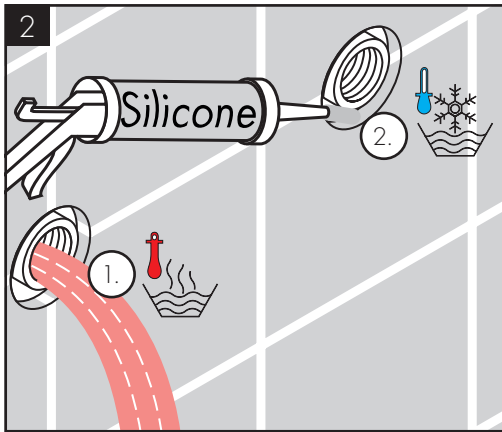
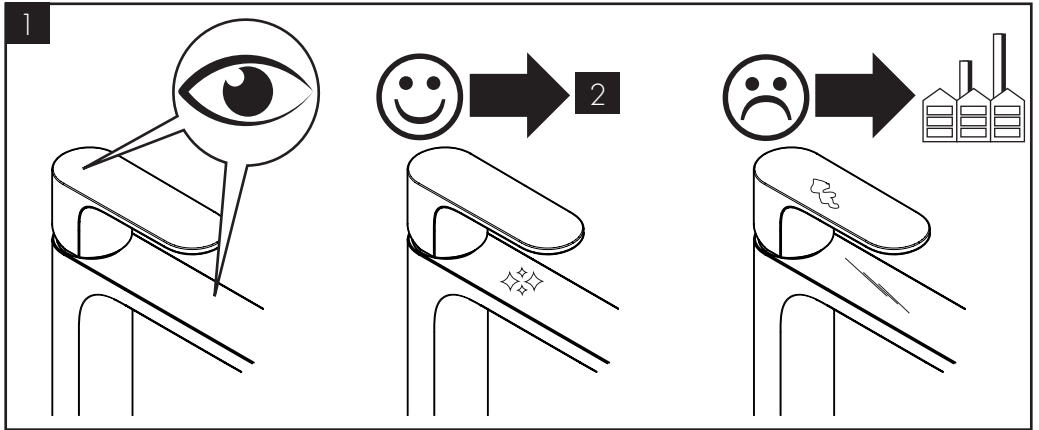
AXOR Montreux
16401009

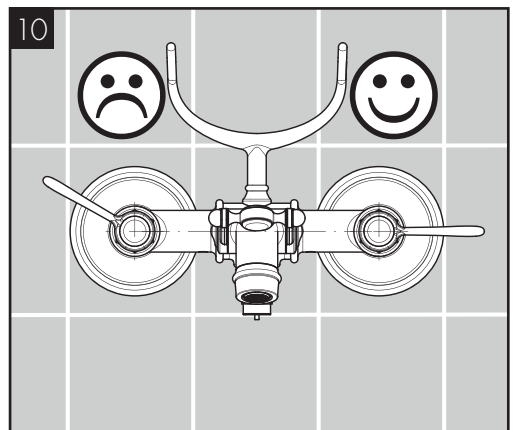
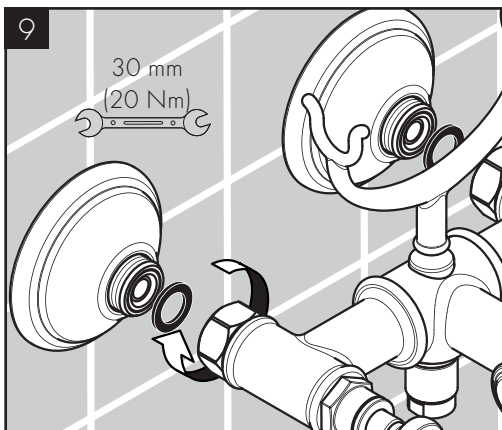
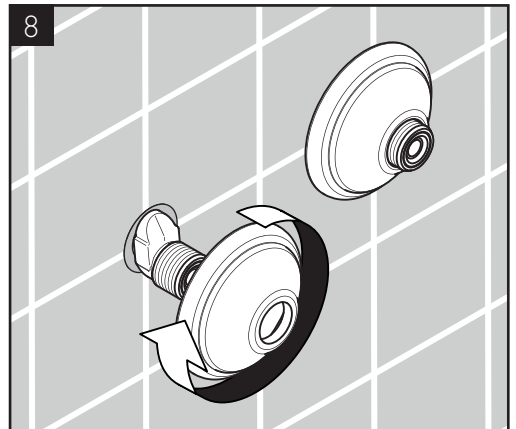
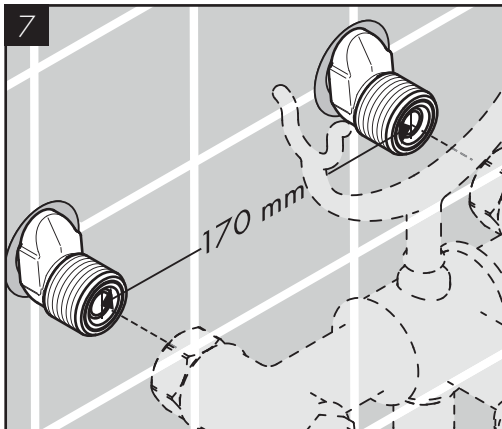
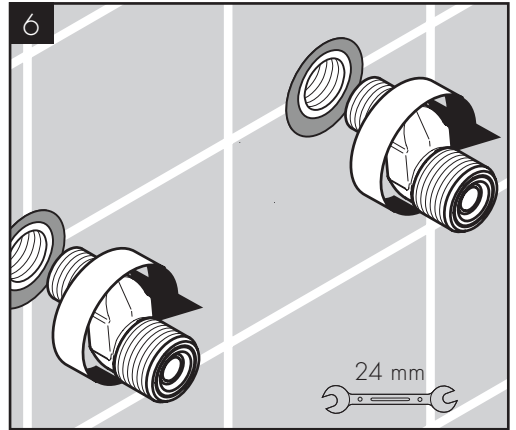
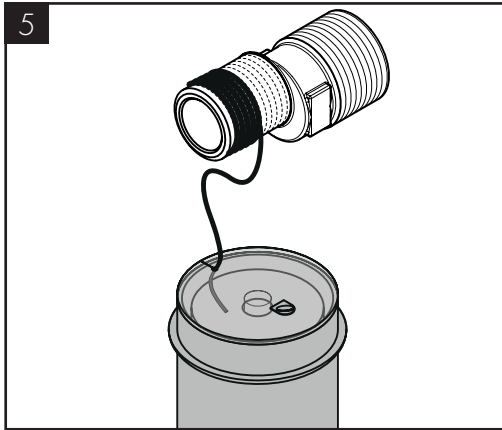
	P	max. 1 MPa (10 bar)	0,1 - 0,5 MPa (1 - 5 bar)	
	T	max. 60°C	< 50°C	

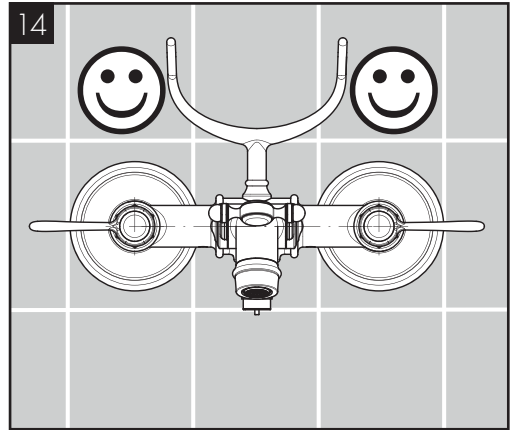
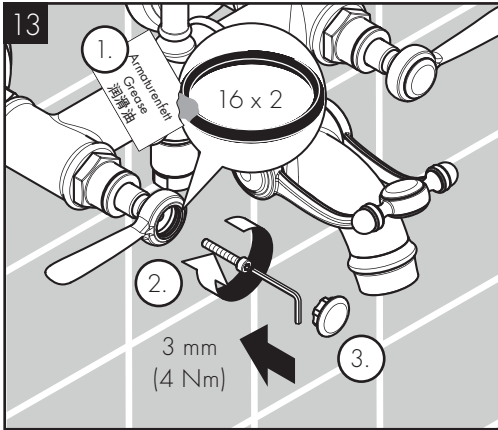
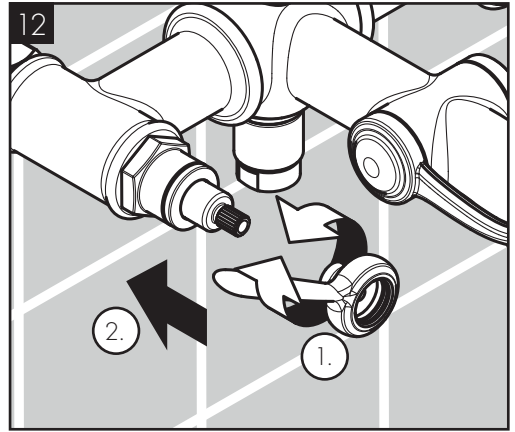
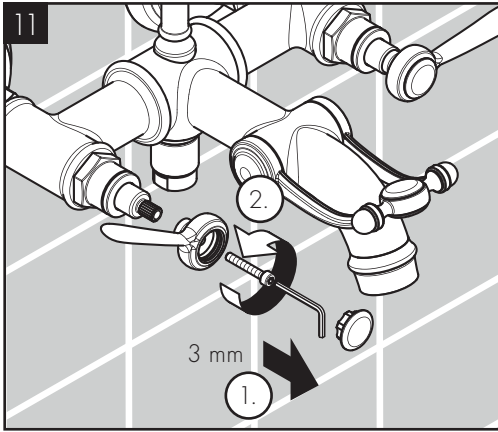


Q = l/min 0 3 6 9 12 15 18 21 24 27 30
Q = l/sec 0 0,1 0,2 0,3 0,4 0,5

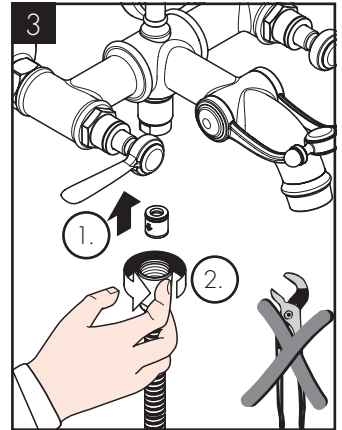
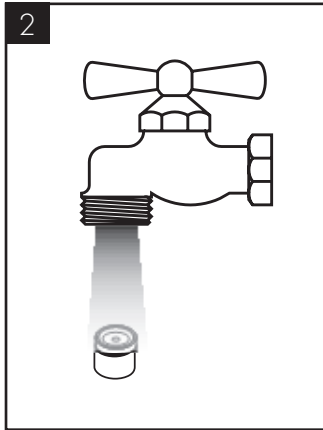
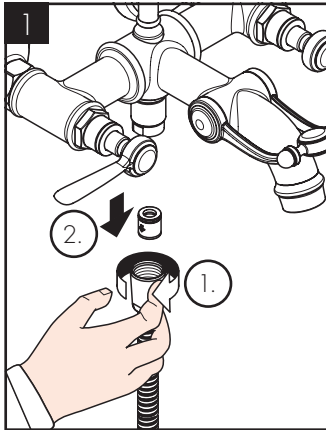
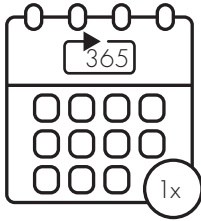




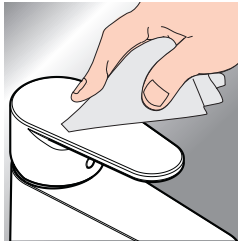




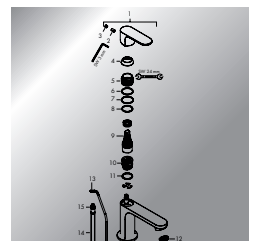
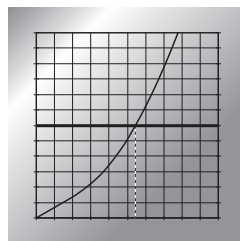
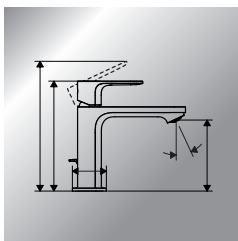
EN 806-5



www.axor-design.com/int/search



*www.hansgrohe.com/warranty



AXOR

Axor / Hansgrohe SE
Austraße 5-9
77761 Schiltach
Deutschland

info@axor-design.com
axor-design.com

03/2025
9.01220.62