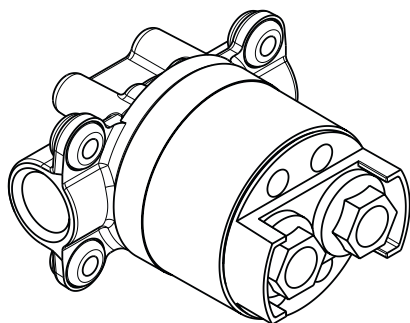


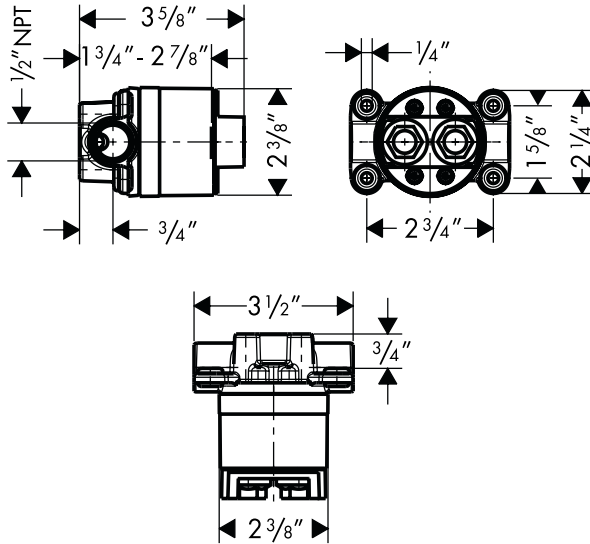
Installation Instructions / Warranty



Starck
10902181

AXOR[®]
hansgrohe

Axor Starck Shower Column Rough 10902181



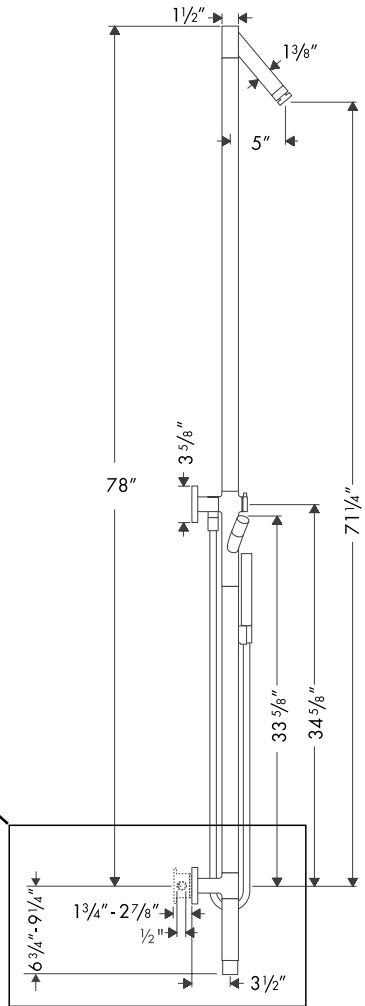
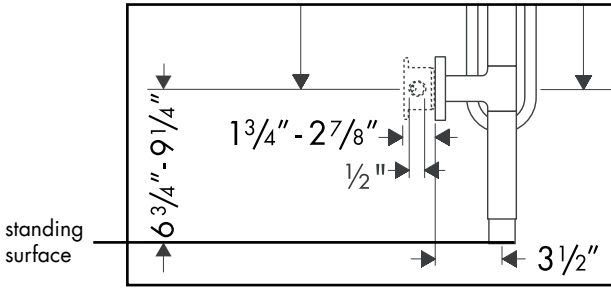
Installation Considerations

- For best results, Hansgrohe recommends that this unit be installed by a licensed, professional plumber.
- Please read over these instructions thoroughly before beginning installation. Make sure that you have all tools and supplies needed to complete the installation.
- Keep this booklet and the receipt (or other proof of date and place of purchase) for this product in a safe place. The receipt is required should it be necessary to request warranty parts.
- This rough is for use with Starck Shower Columns 10905XX1, 10907XX1 and 10912XX1.
- Shower Column 10912XX1 incorporates a thermostatic mixing valve, and is anti-scald.
- Shower Columns 10905XX1 and 10907XX1 are not anti-scald. If this protection is desired or required by local plumbing codes, install remote pressure balancing valve 13418181 to the hot and cold supplies before they are installed into the 10902181 rough.
- For proper column fit, the outside surface of the finished wall must fall between the minimum and maximum markings on the flush insert.
- The 10902181 has 1/2" NPT connections.
- Backflow prevention is provided by two check valves in this rough and an additional check valve in the Shower Column handshower outlet.

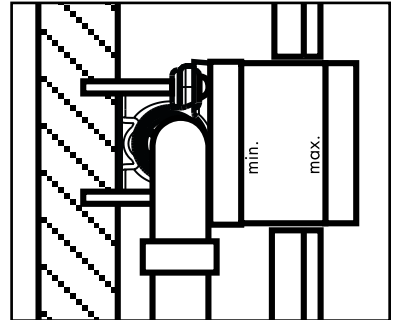
Position the Rough

For proper installation of the Starck Shower Column, the 10902181 rough should be installed $6\frac{3}{4}'' - 9\frac{1}{4}''$ above the finished standing surface.

! Install a header board or stringer to support the rough.

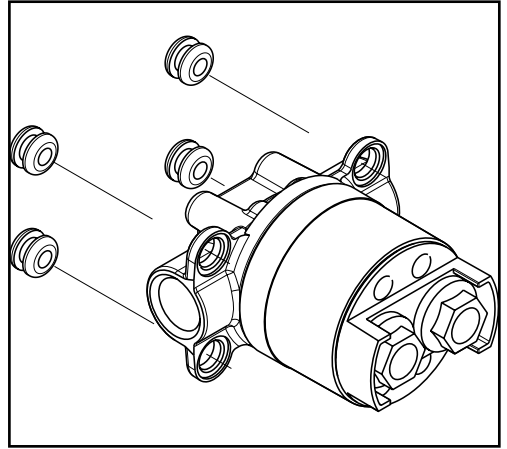


! Position the stringer and rough so that the outside surface of the finished wall will fall between the "minimum" and "maximum" markings on the rough.



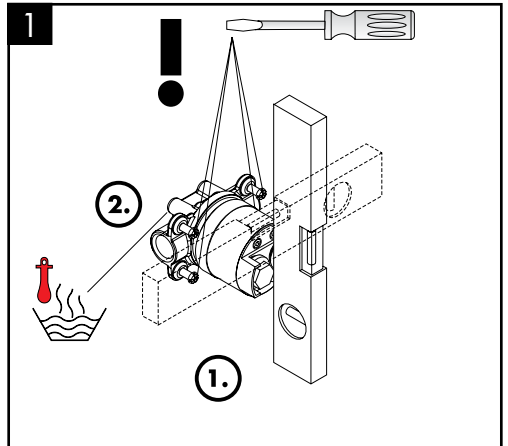
Installation

Install the noise reducers on the rough.



Position the rough against the stringer. Make sure that it is level (1).

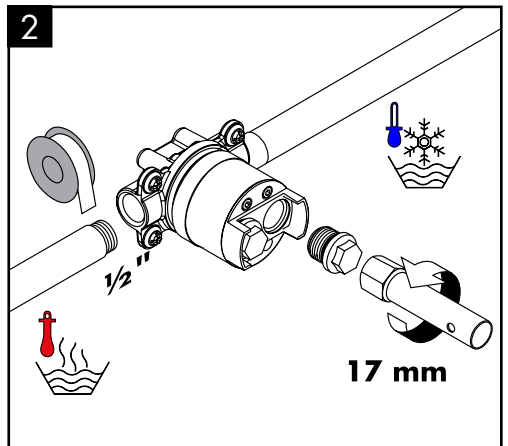
Fasten the rough to the stringer using the appropriate screws (not included) (2).



Wrap the threads on the supply lines with Teflon tape. Connect the hot and cold supply lines to the rough.

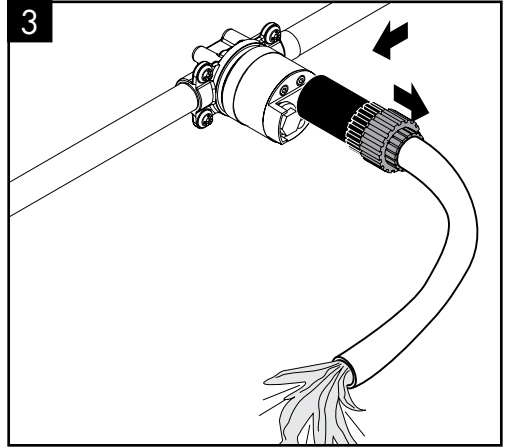
! The hot supply must be connected to the left side of the rough, and the cold supply must be connected to the right side of the rough. **If the rough is not plumbed correctly, the column will not function correctly.**

Use a 17 mm socket wrench (not included) to remove the cold water plug.



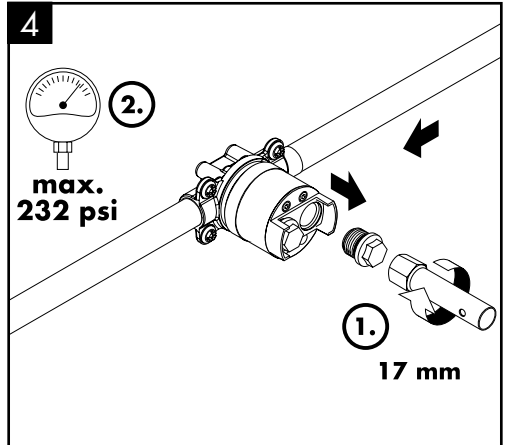
Attach a hose bibb and a hose to the cold water port on the flush box.

Turn on the cold water and flush the line thoroughly.

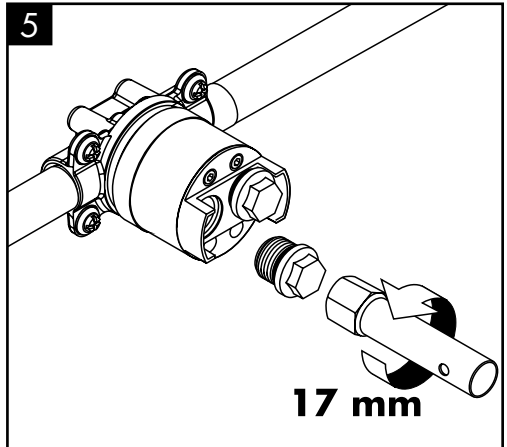


Remove the hose bibb. Reinstall the plug (1).

Pressure test the cold water line (2).

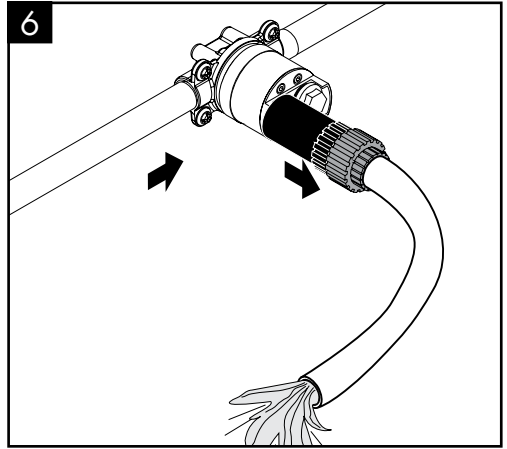


Turn the water off. Remove the hot water plug.

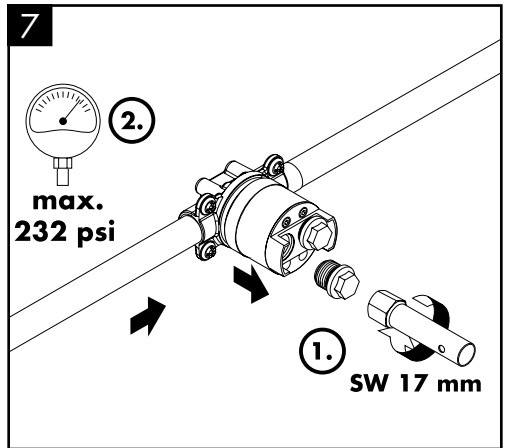


Install a hose bibb and a hose to the hot water port on the flush box.

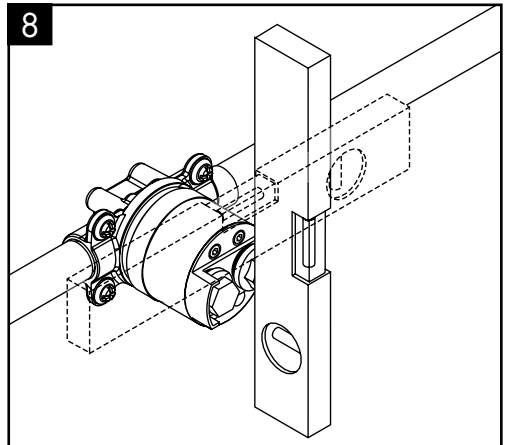
Turn on the hot water and flush the line thoroughly.




Remove the hose bibb. Reinstall the plug (1).
Pressure test the hot water line (2).

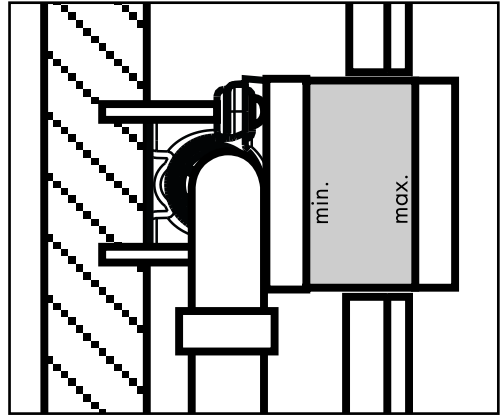


Confirm that the rough is level.



Install the wall and finished wall surface.

 To insure proper fit of the Shower Column, the outside surface of the finished wall must fall between the “minimum” and “maximum” markings on the rough.



Limited Lifetime Consumer Warranty

This product has been manufactured and tested to the highest quality standards by Hansgrohe, Inc. (“Hansgrohe”). This warranty is limited to Hansgrohe products which are purchased by a consumer in the United States after March 1, 1996, and installed in either the United States or Canada.

WHO IS COVERED BY THE WARRANTY

This warranty extends to the original consumer purchaser only. This warranty is non-transferable.

WHAT IS COVERED BY THE WARRANTY

This warranty covers only your Hansgrohe manufactured product. Hansgrohe warrants this product against defects in material or workmanship as follows: Hansgrohe will repair at no charge for parts only or, at its option, replace any product or part of the product that proves defective because of improper workmanship and/or material, under normal installation, use, service and maintenance. If Hansgrohe is unable to provide a replacement and repair is not practical or cannot be timely made, Hansgrohe may elect to refund the purchase price in exchange for the return of the product.

LENGTH OF WARRANTY

Replacement or repaired parts of products will be covered for the term of this warranty as stated in the following two sentences. If you are a consumer who purchased the product for use primarily for personal, family, or household purposes, this warranty extends for as long as you own the product and the home in which the product is originally installed. If you purchased the product for use primarily for any other purpose, including, without limitation, a commercial purpose, this warranty extends only (i) for 1 year, with respect to Hansgrohe and Commercial products, and (ii) for 5 years, with respect to AXOR products.

THIS WARRANTY DOES NOT COVER, AND HANSGROHE WILL NOT PAY FOR:

- A. Conditions, malfunctions or damage not resulting from defects in material or workmanship.
- B. Conditions, malfunctions or damage resulting from (1) normal wear and tear, improper installation, improper maintenance, misuse, abuse, negligence, accident or alteration, or (2) the use of abrasive or caustic cleaning agents or “no-rinse” cleaning products, or the use of the product in any manner contrary to the product instructions. (3) Conditions in the home such as excessive water pressure or corrosion.
- C. Labor or other expenses for the disconnection, deinstallation, or return of the product for warranty service, or for installation or reinstallation of the product (including but not limited to proper packaging and shipping costs), or for installation or reinstallation of the product.
- D. Accessories, connected materials and products, or related products not manufactured by Hansgrohe.

TO OBTAIN WARRANTY PARTS OR INFORMATION

Contact your Hansgrohe retailer, or contact Technical Service at:

Hansgrohe Inc.
1492 Bluegrass Lakes Parkway
Alpharetta GA 30004
Toll-free (800) 334-0455.

In requesting warranty service, you will need to provide

1. The sales receipt or other evidence of the date and place of purchase.
2. A description of the problem.
3. Delivery of the product or the defective part, postage prepaid and carefully packed and insured, to Hansgrohe Inc. 1492 Bluegrass Lakes Parkway, Alpharetta, Georgia 30004, Attention: Technical Service, if required by Hansgrohe.

When warranty service is completed, any repaired or replacement product or part will be returned to you postage prepaid.

EXCLUSIONS AND LIMITATIONS

REPAIR OR REPLACEMENT (OR, IN LIMITED CIRCUMSTANCES, REFUND OF THE PURCHASE PRICE) AS PROVIDED UNDER THIS WARRANTY IS THE EXCLUSIVE REMEDY OF THE PURCHASER. HANSGROHE NEITHER ASSUMES NOR AUTHORIZES ANY PERSON TO CREATE FOR IT ANY OBLIGATION OR LIABILITY IN CONNECTION WITH THIS PRODUCT.

HANSGROHE SHALL NOT BE LIABLE TO PURCHASER OR ANY PERSON FOR ANY INCIDENTAL, SPECIAL, OR CONSEQUENTIAL DAMAGES, ARISING OUT OF BREACH OF THIS WARRANTY OR ANY IMPLIED WARRANTY (INCLUDING MERCHANTABILITY).

Some States do not allow the exclusion or limitation of incidental or consequential damages, so the above limitation or exclusion may not apply to you. This warranty gives you specific legal rights, and you may have other rights which vary from State to State. You may be required by law to give us a reasonable opportunity to correct or cure any failure to comply before you can bring any action in court against us under the Magnuson-Moss Warranty Act.

PRODUCT INSTRUCTIONS AND QUESTIONS

Upon purchase or prior to installation, please carefully inspect your Hansgrohe product for any damage or visible defect. Prior to installing, always carefully study the enclosed instructions on the proper installation and the care and maintenance of the product. If you have questions at any time about the use, installation, or performance of your Hansgrohe product, or this warranty, please call or write to us or call us toll-free at 800 334 0455.

hansgrohe

Hansgrohe, Inc. • 1490 Bluegrass Lakes Parkway • Alpharetta, GA 30004
Tel. 770-360-9880 • Fax 770-360-9887

www.hansgrohe-usa.com